

MODEL 9155D-961

IMPACT HAMMER CALIBRATION SYSTEM

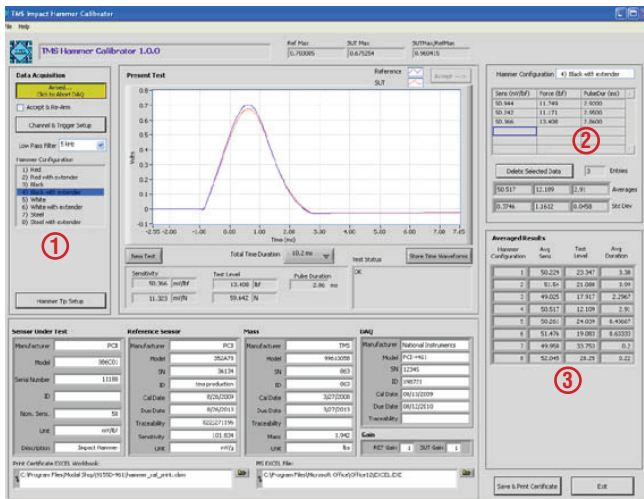
- Quickly and accurately determines the sensitivity of impact hammers with various tip configurations
- Conforms to industry-approved standards and handbooks
- Includes verification hammer for control and regular system validation
- Provides customizable, ISO 17025 compliant calibration certificates

VIA PENDULOUS MASS

The Accelerometer Calibration Workstation with Model 9155D-961 Hammer Calibration option allows users to quickly and easily calibrate their instrumented impact hammers and account for tip inertia or extender mass. Hammer calibration is performed by impacting a pendulous mass instrumented with a calibration accelerometer. Using Newton's second law ($F = ma$), the measured acceleration is multiplied by the known mass to calculate the impact force. The software supports calibration of instrumented hammers with up to 8 different tips, both with and without an extender mass. This economical option uses the existing high-quality data acquisition system in the base Model 9155 Accelerometer Calibration Workstation to quickly and easily perform hammer calibrations and report the results on an easy-to-read, Microsoft Excel® based calibration certificate. Printed certificates fulfill the format requirements set forth by ISO 17025 for calibration certificates.

SPECIFICATIONS	
Impact Range (maximum)	1000 lbf (4.45 kN)
Expected Overall Uncertainty	2.5% ^{[1][2]}
Reference Accelerometer	
Manufacturer/Model	PCB Model 353B04 ^[3]
Nominal Sensitivity (±5%)	10 mV/g (1.02 mV/ms) ^[2]
Reference Mass	
Type (includes 2 masses)	TMS9962C
Material	Stainless Steel
Mass	1 and 2 lb (454 and 907 g)
Operating Temperature	60 to 90° F (16 to 32° C)
Fixture Size	16 x 9 x 20 in (406 x 229 x 508 cm)
Fixture Weight (excl.cal masses)	5.5 lb (2.5 kg)
Sensor Mounting	¼-28 UNF female

9155-961 Software



1. User-defined hammer configuration
2. Current test run data
3. Overview of results

Optional Accessories	
9155D-100	19" Rack Integration. Approx. 36.5 in H x 21.75 in W x 26 in D [93 cm x 55 cm x 66 cm]. Integrates components in 19" rack.
9155D-120	Shaker Mount. Provides wood pedestal to support calibration shaker. Requires user to fill with sand (not included).
9155D-160	Tool Kit. Includes torque wrench, screwdrivers, crescent wrenches, toolbox, etc.
9155D-350	Calibration Label Printing. Provides automatic calibration label printing using a Zebra thermal transfer label printer.
9155D-400	TEDS Sensor Support. Provides for automatic update of TEDS sensors. Requires 9155D-443 option.
9155D-442	Basic ICP Signal Conditioning. Adds signal conditioner for ICP and charge mode sensors.
9155D-443	Dual-mode Charge Amplifier. Computer control and automated switching between ICP and charge mode sensors.
9155D-445	Capacitive Sensor Signal Conditioning. Adds signal conditioner for capacitive sensors.
9155D-478	Piezoresistive Signal Conditioning. Adds support for piezoresistive sensors. Includes PCB 478A30 signal conditioner.
9155D-525	Shock Calibration. Provides for verification of shock accelerometers from 20 g to 10 000 g.
9155D-550	Resonance Check. Provides for resonance check of accelerometers up to 50 kHz.
9155D-575	Laser Primary Calibration. Adds primary calibration capability as specified in ISO 16063-11.
9155D-600	Velocity Sensor Calibration. Allows calibration of velocity sensors. Reports data in velocity units.
9155D-771	Low Frequency (0.5 Hz – 500 Hz). Long stroke shaker with SmartStroke™ technology and accelerometer reference sensor.
9155D-779	Low Frequency (0.1 Hz – 500 Hz). Long stroke shaker with SmartStroke™ technology, accelerometer and optical reference sensors.
9155D-830	K394B30 Air Bearing Shaker. Adds precision air-bearing shaker 5 Hz – 15 kHz.
9155D-831	K394B31 Air Bearing Shaker. Adds precision high-frequency air-bearing shaker 5 Hz – 20 kHz.
9155D-875	High Payload Calibration Shaker. Offers a useable frequency range of 5Hz to 10kHz for heavy payload transducers.
9155D-961	Hammer Calibration. Allows calibration of instrumented impact hammers, includes 9961C cal fixture.

- [1] Based on TMS A2LA Scope of Accreditation
- [2] 95% confidence level (k=2)
- [3] Included with 9155 Calibration System



10310 Aerohub Boulevard, Cincinnati, OH 45215 USA
Toll-Free in the USA: 800 860 4867
Phone: 1 513 351 9919 | Email: info@modalshop.com

The Modal Shop, Inc. offers structural vibration and acoustic sensing systems and services for various applications in design and test laboratories as well as manufacturing plants. An extensive sound and vibration rental program, precision calibration systems, and both modal and vibration shakers are designed to simplify test phases. Non Destructive Testing Systems help manufacturers provide 100% quality inspection of metal components. The Modal Shop, Inc. is a subsidiary of PCB Piezotronics, Inc., and PCB® is a wholly owned subsidiary of MTS Systems Corporation.

© 2019 The Modal Shop, Inc. In the interest of constant product improvement, specifications are subject to change without notice. PCB®, ICP®, Swiveler®, Modally Tuned®, and IMI® with associated logo are registered trademarks of PCB Piezotronics, Inc. in the United States. ICP® is a registered trademark of PCB Piezotronics Europe GmbH in Germany and other countries. UHT-12™ is a trademark of PCB Piezotronics, Inc. SensorLine™ is a service mark of PCB Piezotronics, Inc. SWIFT® is a registered trademark of MTS Systems Corporation in the United States. All other trademarks are property of their respective owners.

DS-0080 revD



MTS Sensors, a division of MTS Systems Corporation (NASDAQ: MTSC), vastly expanded its range of products and solutions after MTS acquired PCB Piezotronics, Inc. in July, 2016. PCB Piezotronics, Inc. is a wholly owned subsidiary of MTS Systems Corp.; IMI Sensors and Larson Davis are divisions of PCB Piezotronics, Inc.; Accumetrics, Inc. and The Modal Shop, Inc. are subsidiaries of PCB Piezotronics, Inc.