

Model Number
9200D

LOW FREQUENCY PORTABLE SHAKER TABLE

Revision: C
ECN #:

Frequency Range (operating, 100 gram payload)
Max Acceleration Amplitude (100 Hz, no payload)
Max Velocity Amplitude (10 Hz, no payload)
Max Displacement Amplitude (1 Hz, no payload)
Maximum Payload^[1]

0.7 Hz – 2 kHz
2 g pk
12 in/s pk
200 mils pk – pk
800 grams
42 – 120k CPM
19.6 m/s² pk
305 mm/s pk
5 mm pk – pk

ACCURACY OF READOUT

Acceleration and Velocity (2 Hz to 2 kHz)^{[2][5]} ±3%
Acceleration and Velocity (0.7 Hz to 2 kHz)^{[2][5]} ±10%
Displacement (3 Hz to 15 Hz)^[3] ±3%
Displacement (1 Hz to 150 Hz)^[3] ±10%
Displacement (0.7 Hz to 150 Hz)^[3] ±2 dB
Amplitude Linearity (100 gram payload, 100 Hz) < 1% up to 2 g pk
Waveform Distortion (1 Hz to 5 Hz) Typically < 15%
Waveform Distortion (>5 Hz to 20 Hz) Typically < 10%
Waveform Distortion (>20 Hz to 2 kHz) Typically < 7%

UNITS OF READOUT

Acceleration (peak and RMS)	g	m/s ²
Velocity (peak and RMS)	in/s	mm/s
Displacement (peak to peak)	mils	µm
Frequency	Hz	CPM

Internal Battery (sealed solid gel lead acid)	12 VDC, 4 amp hours
AC Power (for recharging battery)	110 – 240 VAC, 50 – 60 Hz
Input Power Rating from charger	18 VDC, 1 A
Operating Battery Life ^[4]	
100 gram payload, 100 Hz 1 g pk	14 hours
100 gram payload, 1 Hz 0.02 g pk	7 hours

TEMPERATURE

Operating 32° - 122° F 0° - 50° C

INPUT/OUTPUT

External Source In (Max) 1 VAC RMS
Monitor Reference Out 100 mV/g (nominal) - Buffered internal reference output

NOTES

- [1] Operating range reduced at higher payloads. Reference manual for full details.
[2] Measured with 32 gram quartz reference accelerometer (0.7 Hz – 2 Hz) and 10 gram quartz reference accelerometer (5Hz – 2kHz).
[3] Measured with laser displacement interferometer.
[4] As shipped from factory in new condition.
[5] Depending upon payload at higher frequencies transverse motion may cause localized increased measurement uncertainty

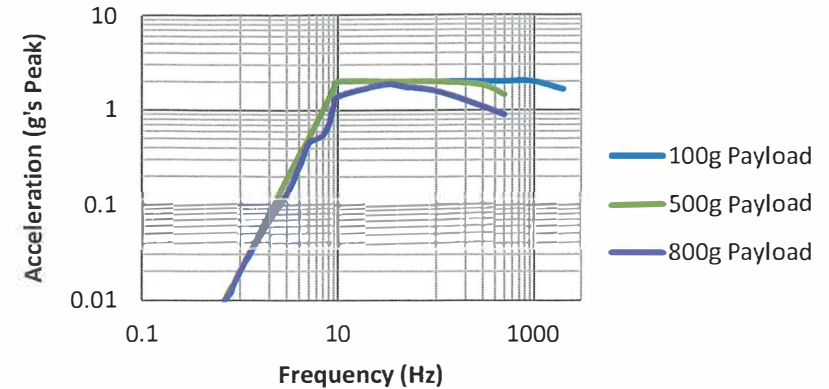
All specifications are at room temperature unless otherwise specified.



ICP® is a registered trademark of PCB Piezotronics, Inc.

In the interest of constant product improvement, specifications may change without notice.

Maximum Acceleration vs. Frequency



PHYSICAL

Dimensions (H x W x D)	8.5 x 12 x 10 in	22 x 30.5 x 28 cm
Weight	18 lb	8.2 kg
Thread Size	¼-28	n/a
Integral Armature Lock	Supplied	

SUPPLIED ACCESSORIES

Accessory Pouch
Shipping Lock
Power Supply and Plug Adaptors: **Model 9100-PS01**
¼-28 to ¼-28 Mounting Stud: **Model 081B20**
10-32 to ¼-28 Mounting Stud: **Model 081A08**
USB Flash Drive with Calibration Report Generation Worksheet: **Model 9110-USB**
M8 x 1.25 M to ¼-28 M Mounting Stud **Model M081A63**
M8 x 1.25 F to ¼-28 M Mounting Pad **Model PVC-MNT01**
M8 x 1 M to ¼-28 M Mounting Stud **Model 081M165**
M8 x 1 F to ¼-28 M Mounting Pad **Model PVC-MNT02**

(OPTIONAL): Proximity probe adaptor kit, supports probes with common case threads ranging from M6 to 3/8 in. Includes Mitutoyo micrometer and nickel-plated 4140 steel target.

Project Engineer: <i>[Signature]</i>	Product Manager: MRS	Mkt Team Leader: <i>[Signature]</i>	Spec Number: PS-0122
Date: 11/11/19	Date: 11/11/19	Date: 11/12/19	

THE MODAL SHOP
AN AMPHENOL COMPANY

10310 Aerohub Boulevard
Cincinnati, OH 45215, USA

800-860-4867
513-351-9919

Fax (513) 458-2172

info@modalshop.com
SAM-F020 revNR 04/04/03