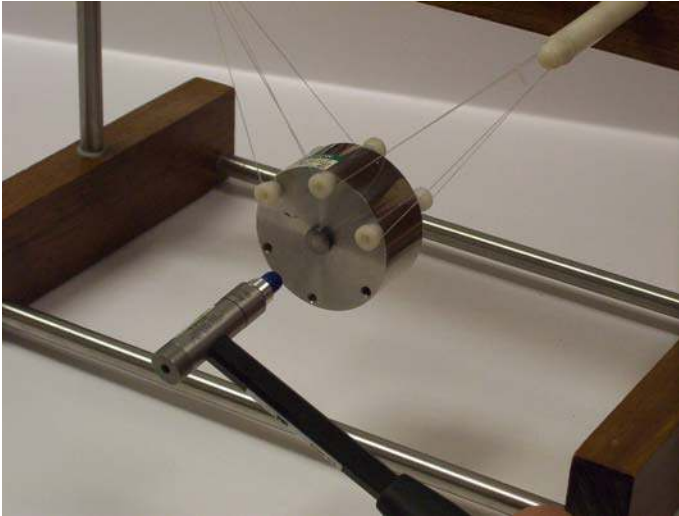


IMPACT HAMMER CALIBRATION SYSTEM



The Accelerometer Calibration Workstation with Model 9155D-961 Hammer Calibration option allows users to quickly and easily calibrate their instrumented impact hammers and account for tip inertia or extender mass. Hammer calibration is performed by impacting a pendulous mass instrumented with a calibration accelerometer. Using Newton's second law ($F = ma$), the measured acceleration is multiplied by the known mass to calculate the impact force. The software supports calibration of instrumented hammers with up to 8 different tips, both with and without

an extender mass. This economical option uses the existing high-quality data acquisition system in the base Model 9155 Accelerometer Calibration Workstation to quickly and easily perform hammer calibrations and report the results on an easy-to-read, Microsoft Excel based calibration certificates. Printed certificates fulfill the format requirements set forth by ISO 17025 for calibration certificates.

BENEFITS:

- Quickly and accurately determines the sensitivity of impact hammers with various tip configurations
- Conforms to industry-approved standards and handbooks
- Includes verification hammer for control and regular system validation
- Provides customizable, ISO 17025 compliant calibration certificates

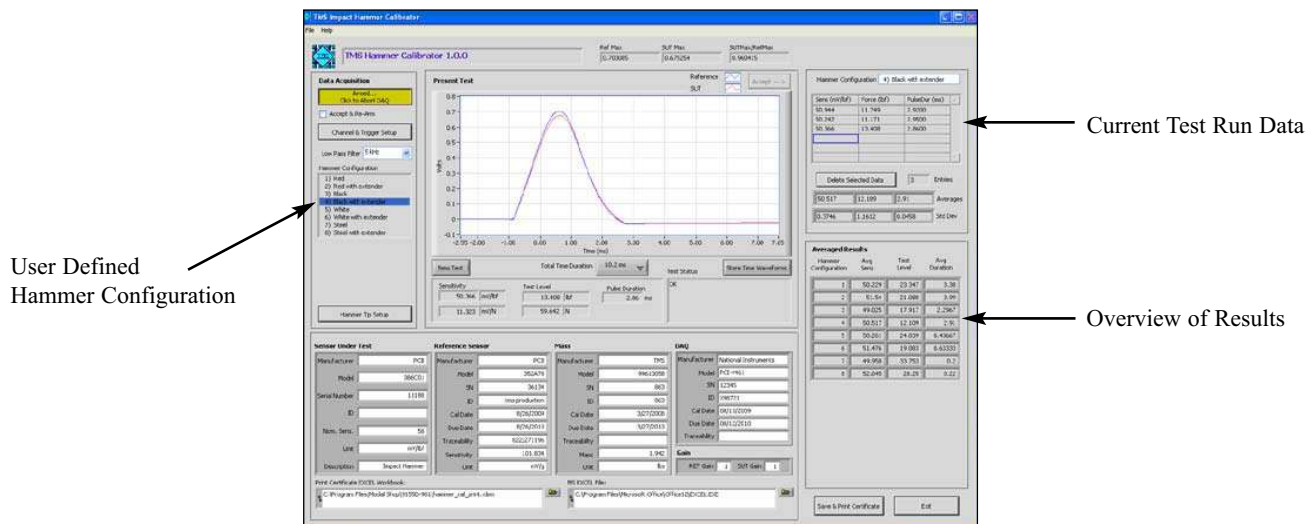


Impact Range (maximum)	1000 lbf [4.45 kN]
Expected Overall Uncertainty	2.5 % ^{1,2}
Reference Accelerometer	
Manufacturer/Model	PCB Model 353B04 ³
Nominal Sensitivity (+/-5%)	10 mV/g [1.02 mV/ms ²]
Reference Mass	
Type (includes 2 masses)	TMS 9962C
Material	Stainless Steel
Mass	1 and 2 lbs [454 and 907 grams]
Operating Temperature	60-90° F [16-32° C]
Fixture Size	16" x 9" x 20" [406 x 229 x 508 mm]
Fixture Weight (excl. cal masses)	5.5 lbs [2.5 kg]
Sensor Mounting	1/4-28 UNF female

¹ Based on TMS A2LA Scope of Accreditation

² 95% confidence level (k=2)

³ Included with 9155 Calibration System



OTHER OPTIONS AVAILABLE:

9155D-100	19" Rack Integration. Approx. 36.5"H x 21.75"W x 26"D [93cm x 55cm x 66cm]. Integrates components in 19" rack.
9155D-120	Shaker Mount. Provides wood pedestal to support calibration shaker. Requires user to fill with sand (not included).
9155D-160	Tool Kit. Includes torque wrench, screwdrivers, crescent wrenches, toolbox, etc.
9155D-350	Calibration Label Printing. Provides automatic calibration label printing using a Zebra thermal transfer label printer.
9155D-400	TEDS Sensor Support. Provides for automatic update of TEDS sensors. Requires 9155D-443 option.
9155D-442	Basic ICP Signal Conditioning. Adds signal conditioner for ICP and charge mode sensors.
9155D-443	Dual-mode Charge Amplifier. Computer control and automated switching between ICP and charge mode sensors.
9155D-445	Capacitive Sensor Signal Conditioning. Adds signal conditioner for capacitive sensors.
9155D-478	Piezoresistive Signal Conditioning. Adds support for piezoresistive sensors. Includes PCB 478A30 signal conditioner.
9155D-501	Linearity. Provides for multipoint sensor linearity checks via sinusoidal vibration up to 40g.
9155D-525	Shock Calibration. Provides for verification of shock accelerometers from 20g to 10,000g.
9155D-550	Resonance Check. Provides for resonance check of accelerometers up to 50 kHz.
9155D-575	Laser Primary Calibration. Adds primary calibration capability as specified in ISO 16063-11.
9155D-600	Velocity Sensor Calibration. Allows calibration of velocity sensors. Reports data in velocity units.
9155D-771	Low Frequency (0.5Hz-500Hz). Long stroke shaker with SmartStroke™ technology and accelerometer reference sensor.
9155D-779	Low Frequency (0.1Hz-500Hz). Long stroke shaker with SmartStroke™ technology, accelerometer and optical reference sensors.
9155D-830	K394B30 Air-Bearing Shaker. Adds precision air-bearing shaker 5 Hz - 15 kHz.
9155D-831	K394B31 Air-Bearing Shaker. Adds precision high-frequency air-bearing shaker 5 Hz - 20 kHz.
9155D-913	Impulse Calibration. Allows dynamic impulse calibration of pressure transducers from 200 to 15,000 psi.

The Modal Shop 3149 E Kemper Road, Cincinnati, OH 45241 USA
Toll free 800-860-4867 / Phone +1 513-351-9919 / Fax +1 513-458-2172
E-mail info@modalshop.com Web site www.modalshop.com

© 2012 PCB Group, Inc. In the interest of constant product improvement, specifications are subject to change without notice.
 PCB and ICP are registered trademarks of PCB Group, Inc.