


Control Panel - System Utilities

Note: It is necessary to press the  key one time in order to see the System Utilities icon on the Control Panel.



To activate the System Utilities Page, press the  (TOOLS) key and highlight the System Utilities icon as shown in FIGURE 23-1.



FIGURE 23-1 Control Panel

Press the  key to open the System Utilities Page.
There is one System Utilities Page: File System.

File System

The File System page is used to repair or recover from file system problems. The functions available on this page are similar to function that would be used to manage a hard drive. See FIGURE 23-2.

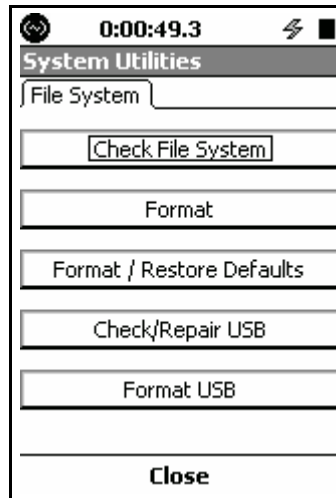


FIGURE 23-2 File System

Note that the two USB options shown in FIGURE 23-2 will only appear if the USB host port is turned on and a USB storage device is connected.

The five functions on the File System page are

- Check File System
- Format
- Format & Restore Defaults
- Check/Repair USB
- Format USB

Highlight the desired function and press the **ENTER** key to initiate this operation.

Warning: Using these functions may cause loss of data and restoration of the Model 831 to default conditions.

The user should only activate these functions if there appears to be a problem.

Check File System

These utilities will detect and repair file system problems.

When the Check File System button is selected, the Model 831 will check the file system in the Model 831, similar to Check Disk on a PC. If a problem is detected, an attempt will be made to repair the problem.

Format

Selecting this function will format the internal data storage area in the memory of the Model 831. This operates similar to the Format function on a PC. System and Settings are preserved.

Format & Restore Defaults

Note: User calibrations and calibration history data are erased when this function is implemented.

Selecting this function formats the internal data storage area in the memory of the Model 831. The Model 831 is then restored to factory settings.

The Format and Format & Restore Defaults function will erase all internal data files, but it will not affect data stored in USB memory.

Check/Repair USB

If you believe that the USB mass storage is corrupt, this utility can be used to check and repair the corrupted sectors of the USB mass storage device. Set the USB Host Port to ON, insert the USB mass storage device into the USB connector and run this utility. When the action has been completed, the message shown in FIGURE 23-3 will be displayed.



FIGURE 23-3 USB Check/Repair Done Message

If you still believe that the USB mass storage device is corrupt, a Format USB operation should be performed.

Format USB

CAUTION: When the mass storage device is formatted, all data stored on it will be lost.

If you believe that the Check/Repair USB operation described in "Check/Repair USB" on page 23-3 was not successful, try formatting the USB mass storage device. Set the USB Host Port to ON, insert the USB mass storage device into the USB connector and run this utility. When the action has been completed, the message shown in FIGURE 23-4 will be displayed.



FIGURE 23-4 USB Drive Formatted Message

Note: To completely erase a USB drive, do a Check/Repair USB operation followed by a Format USB operation. Also, Format USB will not format USB drives larger than 2 GB.

The USB mass storage device will now be formatted using FAT16 file system.

If for some reason the USB mass storage device is not detected, the message shown in FIGURE 23-5 will be displayed.

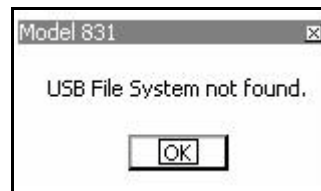
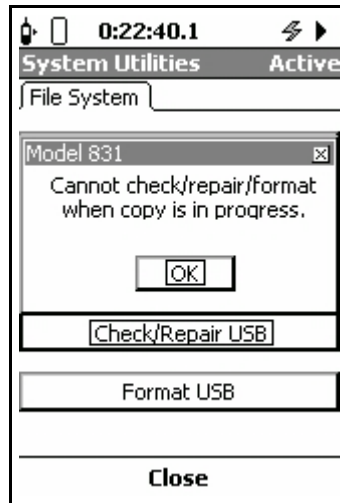


FIGURE 23-5 USB File System Not Found Message

If any of the above operations are initiated while the USB mass storage device is mounted or a "move/copy to USB" operation is in progress, there is a possibility that the file system will be corrupted. As a result, the operation will be

denied and the message shown in FIGURE 23-6 will be displayed.



*Note that the **Copy to USB** icon appears on the upper left corner of this display.*

FIGURE 23-6 Cannot Check/Repair/Format Message

