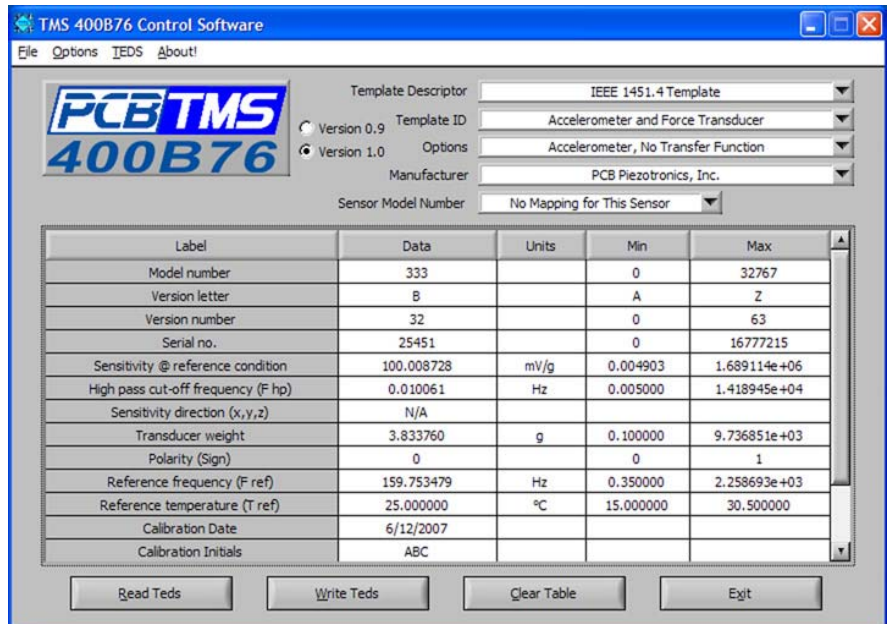


# TEDS SENSOR INTERFACE KIT

The Model 400B76 TEDS (Transducer Electronic Data Sheet) Sensor Interface Kit offers the capability to communicate with TEDS sensors over a USB port of a Windows® PC. With an intuitive graphical interface to the data in a TEDS sensor, the 400B76 reads TEDS from, and writes TEDS to, sensors with a single mouse click. Model 400B76 supports more TEDS templates than any other previously available TEDS sensor interface kit. Providing all of the hardware and software required to interface with TEDS sensors, the Model 400B76 kit supports IEEE 1451.4™ templates, LMS International templates, and manufacturer defined templates. Principle types of transducers supported are accelerometers, microphones, charge amplifiers, and microphone preamplifiers. A triaxial adapter (optional) is available for direct interface with triaxial accelerometers with one mouse-click.



## FEATURES:

- Supports IEEE P1451.4™ (Version 0.9) and IEEE 1451.4™ (Version 1.0) templates
- Enables communication (both read and write) to TEDS Sensors ref from a Windows® PC
- Supports more TEDS templates than any other available interface
- Flexible data decoding engine allows support of new TEDS templates by simply copying files
- Allows conversion of accelerometer and microphone templates from version 0.9 to version 1.0
- USB powered, plug and play
- Triaxial accelerometer support



# TEDS SENSOR INTERFACE KIT

Model 400B76 simplifies communication with different sensors from different manufacturers by supporting a broad selection of templates in a single software interface. Designed to use the commonly found USB type interface available on most PC's, the 400B76 includes all necessary components to plug a TEDS sensor into a PC and both read and write TEDS.

## TEDS TEMPLATES SUPPORTED

### **IEEE ICP® Accelerometer Templates**

Basic Accelerometer  
Accelerometer with FRF  
Accelerometer with FRF v0.91  
Accelerometer with 2 Gains  
Accelerometer with 2 Gains and FRF

### **IEEE Charge Mode Templates**

Charge Amplifier  
Charge Amplifier and Accelerometer  
Charge Amplifier with 2 Gains

### **LMS International Accelerometer Templates**

LMS Aerospace Geometry  
LMS Automotive Geometry  
LMS Free Format

### **IEEE Acoustic Templates**

Microphone with Integrated Preamp  
Microphone with Integrated Preamp and FRF  
Microphone with Integrated Preamp and 2 Gains  
Microphone with Integrated Preamp, 2 Gains, and FRF  
Microphone Preamp  
Microphone Preamp and Microphone  
Microphone Preamp with 2 Gains  
Microphone Preamp with FRF  
Microphone Preamp with 2 Gains and FRF

### **Manufacturer Templates**

TMS Force Sensor Template  
*Other Manufacturer Templates Are Possible  
As They Are Released*

## OEM LICENSING AVAILABLE

The broad support of the above templates in the 400B76 is made possible by the KTEDS-005 software libraries. TMS supports the widest range of TEDS templates in any currently available TEDS encoding/decoding engine.

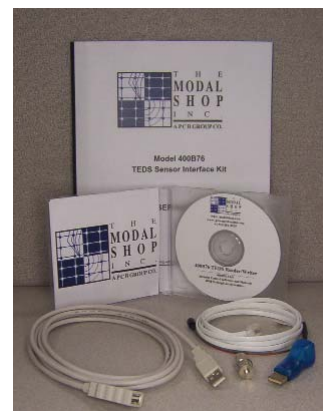
KTEDS-005 is already the default TEDS library for supporting hardware interfaces from PCB Piezotronics and The Modal Shop. This same engine can be used in your design. Contact us today for more information on licensing this capability for your own hardware platform.

## SYSTEM COMPONENTS

- **400B76** - System Software
- **DS9490R** - USB Port Interface
- **009M86** - Sensor cable (10-32)
- **070A08** - Cable Adapter
- **26686** - USB extension cable (3m)

## OPTIONAL ACCESSORY

- **A3M-T-USB** - Triaxial adapter



## **Related Products**

- **Model 5020A Test Setup Manager**  
Automate the collection and integration of test setup data using customized Palm OS®/ Windows® software. Synchronize barcoded information with TEDS data, and create Universal Files. Includes handheld barcode reader and cradle.
- **PCB's Full Line of TEDS Accelerometers & Microphones**  
PCB's tradition in leading the multi-channel test & measurement market continues with a full line of TEDS sensors.
- **Model 070A70 (BNC) / 070A71 (10-32) In-line TEDS Module**  
Allows use of TEDS technology on non-TEDS legacy sensors.



**The Modal Shop** 3149 E Kemper Road, Cincinnati, OH 45241, USA  
**Toll free 800-860-4867 / Phone 513-351-9919 / Fax 513-458-2172**  
**E-mail [info@modalshop.com](mailto:info@modalshop.com) Web site [www.modalshop.com](http://www.modalshop.com)**

© 2007 PCB Group, Inc. In the interest of constant product improvement, specifications are subject to change without notice.  
PCB and ICP are registered trademarks of PCB Group, Inc.

Windows is a registered trademark of Microsoft Corp. IEEE, IEEE 1451.4 and IEEE P1451.4 are trademarks of the Institute of Electrical and Electronics Engineers, Inc.