

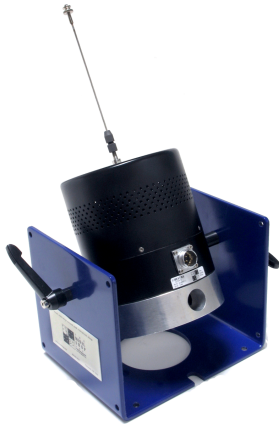


# K2100E100 Shaker Kit Selection and Quick Start Guide

This shipment contains \_\_\_\_\_ K2100E100 Shaker kit(s).  
Each kit includes one of each item in this section as noted.

Job # \_\_\_\_\_

Customer \_\_\_\_\_



\_\_\_\_\_ **2100E11** Shaker mounted on trunnion base with EasyTurn™ handles. Typically ships in Pelican case (2100E20). Cable to amplifier included.



\_\_\_\_\_ **2100E18** Amplifier with power cord. Used for 100 lbf output.

120 V       230 V

\_\_\_\_\_ Power Plug Type



\_\_\_\_\_ **2000X04** Cooling vacuum for 2100E11 shaker. Includes vacuum hose, adaptors, and muffler.

115 V/60 Hz

230 V/60 Hz

230 V/50 Hz

\_\_\_\_\_ Power Plug Type

**2100E11-001** Shaker accessory kit. Includes:

1	Stinger Kit 2155G12 - 3/32"
2	Stinger Kit 2150G12 - 1/16"
3	Stinger Thumb Nuts (qty 6)
4	K2160G - Piano Wire Stinger Kit
5	5.5 mm Wrench and Turnbuckle
6	M6 Nuts (qty 5)
7	Two-part Chuck
8	M6 to 10-32 Adaptor
9	Hex Wrench
10	Flexure Supports (qty 16)
11	Hex Wrench
12	0.5 mm Collet
13	1.0 mm Collet
14	1.6 mm Collet
15	2.5 mm Collet
16	3.5 mm Collet
17	Fuse (qty 2)
18	Wrench – 13mm (qty 2)



## Available Accessories/Options

\_\_\_\_\_ 2050A Lateral Excitation Stand

\_\_\_\_\_ PCB 288D01 ICP® Impedance Head

\_\_\_\_\_ PCB 208 Series ICP® Force Sensors. Indicate Model: \_\_\_\_\_

\_\_\_\_\_ Type 2120Gxx threaded (10-32) stainless steel rod stingers. Circle length: 9" 12" 18"

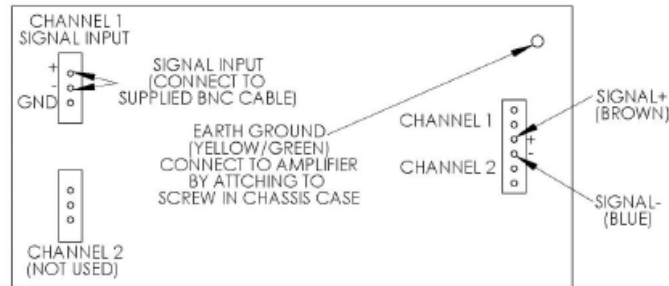
\_\_\_\_\_ Model 8032S Air Ride Test Support



## K2100E100 Shaker Kit Selection and Quick Start Guide

### Connecting the K2100E0100 Shaker Kit

1. Connect shaker cable to amplifier (see below). **Note:** Orange and black overdrive wires are not used.



2. Connect the shaker cable and cooling vacuum hose to shaker.
3. Power amplifier and cooling vacuum with included power cables.
4. Connect input signal via the BNC input connector on the back of the amplifier.
5. Ensure Channel 1 and 2 gain controls is set to off ( $\infty$ ) before turning amplifier on. **Note:** Gain controls are located on the rear control panel near signal input connector.
6. Turn on master power switch located on the front of the 2100E18 amplifier and activate vacuum cooling. Adjust gain control on channel 1 as necessary.

### 2100E18 User Tips

- Clip (red) LED indicator:
  - Normal indication: Illuminates whenever the amplifier is driven beyond full power. The resulting distortion corresponds to the brightness of the LED. Distortion that causes only brief flashing may not be audible. During muting, the LED fully illuminates. This occurs during normal "On-Off" muting.
  - Abnormal indication: Bright red illumination while the amp is being used indicates either thermal muting or a shorted output. If the amplifier overheats, the fan will run at full speed, and operation should resume within one minute. Allow the fan to run, and make sure the amplifier ventilation is adequate. A shorted or overloaded output circuit will cause excessive Clip flashing and possible overheating. If distortion is audible without a Clip indication, the problem is either before or after the amplifier. Check for damaged shakers or overloaded signal source. The amplifier Gain control should be in the upper half of its range to prevent input overload.
- Signal (green) LED indicator:
  - Normal indication: illuminates when the input signal is strong enough to drive the output to -40 dB from rated 8 ohm power. As signal approaches full power, the LED will illuminate continuously.
  - If no indication: check Gain settings and increase gain if necessary. Check input connections and audio source for signal. If the Clip LED illuminates with little or no Signal indication, check the output wiring for shorts.
  - Abnormal indication: If the Signal LED illuminates with no signal input, there may be system oscillations or some other malfunction. Disconnect the load and fully reduce the gain. If the signal LED remains on, the amp may need servicing.

[Videos](#) and [FAQ guides](#) are available online. Feel free to contact The Modal Shop for support at [info@modalshop.com](mailto:info@modalshop.com) or +1 513-351-9919.