

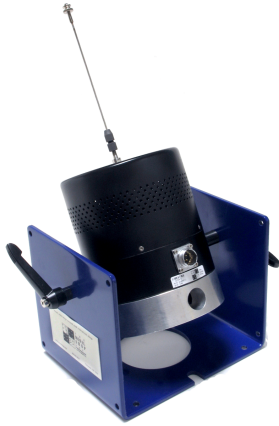


K2100E035 Shaker Kit Selection and Quick Start Guide

This shipment contains _____ K2100E035 Shaker kit(s).
Each kit includes one of each item in this section as noted.

Job # _____

Customer _____



_____ **2100E11** Shaker mounted on trunnion base with EasyTurn™ handles. Typically ships in Pelican case (2100E20). Cable to amplifier included.



_____ **2100E21-400** Amplifier with power cord. Used for 35 lbf output (standard)

120 V 220 V

_____ Power Plug type

Optional Amplifier



_____ **2050E05** Optional amplifier with power cord. Also provides 35 lbf output and offers selectable voltage or current mode

120 V 220 V

_____ Power Plug type

_____ **2100E11-001** Shaker accessory kit. Includes:

1	Stinger Kit 2155G12 - 3/32"
2	Stinger Kit 2150G12 - 1/16"
3	Stinger Thumb Nuts (qty 6)
4	K2160G - Piano Wire Stinger Kit
5	5.5 mm Wrench and Turnbuckle
6	M6 Nuts (qty 5)
7	Two-part Chuck
8	M6 to 10-32 Adaptor
9	Hex Wrench
10	Flexure Supports (qty 16)
11	Hex Wrench
12	0.5 mm Collet
13	1.0 mm Collet
14	1.6 mm Collet
15	2.5 mm Collet
16	3.5 mm Collet
17	Fuse (qty 2)
18	Wrench – 13mm (qty 2)



Available Accessories/Options

_____ 2050A Lateral Excitation Stand

_____ PCB 288D01 ICP® Impedance Head

_____ PCB 208 Series ICP® Force Sensors. Indicate Model: _____

_____ Model 8032S Air Ride Test Support



K2100E035 Shaker Kit Selection and Quick Start Guide

Connecting the K2100E035 Shaker Kit

1. Connect shaker cable to amplifier (see below table)

Shaker Cable Wire Color	Function	2050E05	2100E21-400
Brown	Armature	Signal + / OUT	Signal + / SHAKER +
Blue	Armature	Signal - / RET	Signal - / SHAKER -
Orange	Overtravel	Overdrive / GND	Overdrive / Interlock +
Black	Overtravel	Overdrive / INT	Overdrive / Interlock -
Yellow/green	Ground	Do Not Connect	PE / Earth Ground

2. Connect the shaker cable to shaker.
3. Power amplifier with included power cable
4. Connect input signal via the BNC connector labeled “Signal Input” on the back of the 2100E21-400 or to the BNC connector labeled “AC” on the back of the 2050E05 amplifier.
5. Turn on master power switch and position gain knob to desired setting. **Note:** Master power switch is located on the back of the 2100E21-400 amplifier and on the front of the 2050E05 amplifier.

2100E21-400 User Tips

- As a safety measure, if the gain knob is not in the “mute” position when power is turned on, it will need to be turned to “mute” before amplifier can be used.
- Output clipping error: Anytime the output waveform is clipped due to too much gain or the input amplitude being too high, the LCD screen will flash the “output clipping” message until the clipping stops. This helps avoid unwanted output distortion. During clipping, all menus and buttons remain functional.
- Output interlock: Anytime an error or a fault condition occurs while the amplifier is on, the amplifier will automatically mute and a message will be displayed on the LCD. Consult the “*Troubleshooting Guide*” on Page 31 of the manual to fix any problem that caused the error, and press F1 to clear the error message. If the gain knob is not turned to “mute,” it will have to be turned to “mute” first before the amplifier can be turned back on.

2050E05 User Tips

- Trip indicator flashing: The “TRIP” indicator flashes if the amplifier has been turned on with the gain out of the reset position or if the external (fault open) interlock is open. The amplifier output is inhibited during this interlock condition. The indicator also flashes during a heat sink over-temperature condition. The amplifier output will be compressed if the overheat condition persists but will automatically restore itself after the heat sink temperature drops.
- The output peak voltage bar graph indicates the peak voltage applied to the connected load and will indicate voltage clipping limits and output signal level. It can also be useful in detecting output open circuit problems. The output RMS current level graph indicates the amount of current being delivered to the load and can be used to prevent overdriving and subsequent damage to connected loads.

[Videos](#) and [FAQ guides](#) are available online. Feel free to contact The Modal Shop for support at info@modalshop.com or +1 513-351-9919.